



# Indiana State Department of Health

## Weekly Influenza Report

### Week 42

Report Date: Friday, October 30, 2015

The purpose of this report is to describe the spread and prevalence of influenza-like illness (ILI) in Indiana. It is meant to provide local health departments, hospital administrators, health professionals and residents with a general understanding of the burden of ILI. Data from several surveillance programs are analyzed to produce this report. Data are provisional and may change as additional information is received, reviewed and verified. For questions regarding the data presented in this report, please call the ISDH Surveillance and Investigation Division at 317-233-7125.

### WEEKLY OVERVIEW

Influenza-like Illness - Week Ending October 24, 2015	
ILI Geographic Distribution	Sporadic
ILI Activity Code	Minimal
Percent of ILI reported by sentinel outpatient providers	1.01%
Percent of ILI reported by emergency department chiefs	1.19%
Percent positivity of influenza specimens tested at ISDH	0%
Number of influenza-associated deaths	1
Number of long-term care facility outbreaks	0
Number of school-wide outbreaks	0



## Indiana State Department of Health

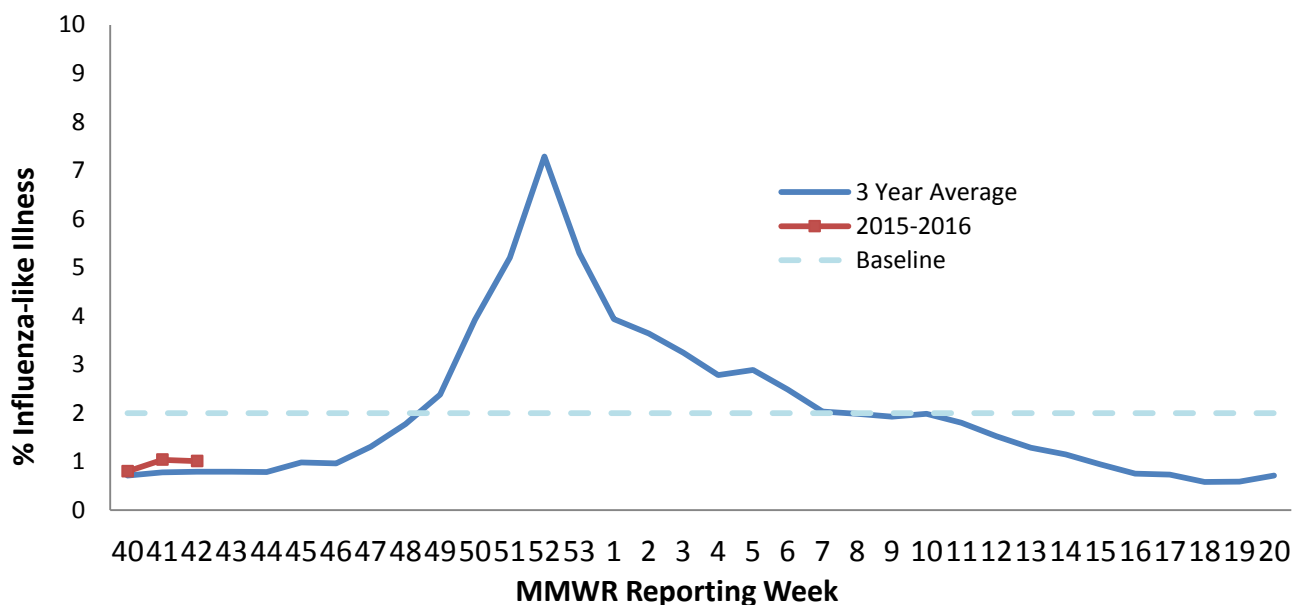
### SENTINEL SURVEILLANCE SYSTEM

Data are obtained from sentinel outpatient providers participating in the U.S. Outpatient Influenza-like Illness Surveillance Network (ILINet). Data are reported on a weekly basis for the previous Morbidity and Mortality Weekly Report (MMWR) Week by the sentinel sites and are subject to change as sites back-report or update previously submitted weekly data.

Percent of ILI Reported by Type of Sentinel Outpatient Facility, Indiana, 2015-2016 Season			
MMWR Week	All Reporters %ILI (n)	Universities %ILI (n)	Non-Universities %ILI (n)
<b>40</b>	0.80% (25)	0.18% (9)	1.18% (16)
<b>41</b>	1.04 (23)	0.26% (8)	1.43 (15)
<b>42</b>	1.01 (22)	0.18 (8)	1.46 (14)

Percent of ILI Reported by Age Category in Sentinel Outpatient Facilities, Indiana, 2015-2016 Season		
Age Category, years	Total Number of ILI	Percent of ILI
0-4	20	42.55%
5-24	20	42.55
25-49	5	10.63
50-64	1	2.12
65+	1	2.12
Total	47	--

**Percent of Patients with Influenza-like Illness (ILI) in Provider Clinics, Indiana, 2015-2016**





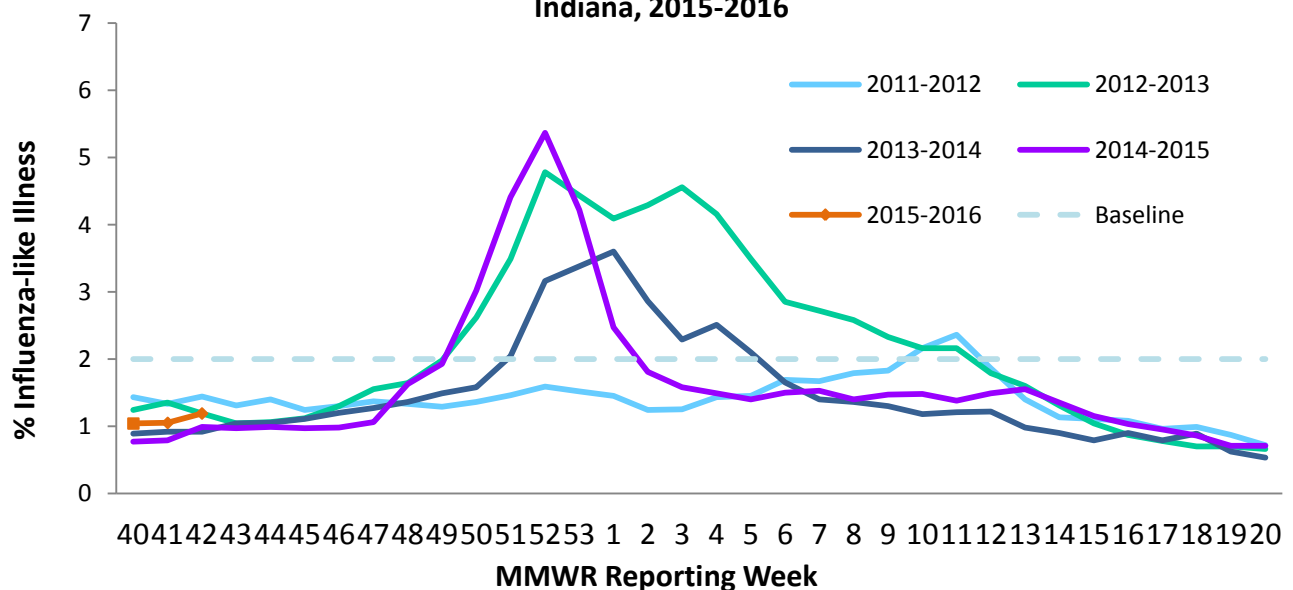
# Indiana State Department of Health

## SYNDROMIC SURVEILLANCE SYSTEM

Data are obtained from hospital emergency department chief complaint data through the Indiana Public Health Emergency Surveillance System (PHESS). Data are reported on a weekly basis for the previous Morbidity and Mortality Weekly Report (MMWR) Week and are subject to change as hospitals back-report or update previously submitted weekly data.

Percent of ILI Reported in Emergency Departments by District, Indiana, 2015-2016 Season		
	Previous MMWR Week	Current MMWR Week
Indiana	1.05%	1.19%
District 1	0.86	0.87
District 2	1.27	1.84
District 3	0.68	0.68
District 4	1.83	1.88
District 5	0.90	1.06
District 6	1.50	1.49
District 7	0.79	0.86
District 8	0.58	0.94
District 9	1.58	1.82
District 10	1.07	1.05

**Percent of Patients with Influenza-Like Illness (ILI) Chief Complaint in Emergency Departments, Indiana, 2015-2016**





## Indiana State Department of Health

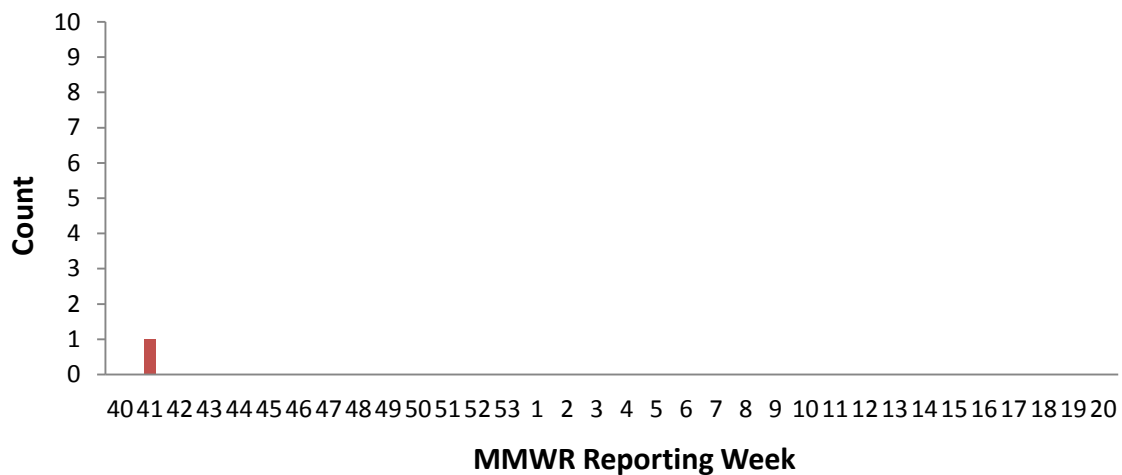
### **INFLUENZA-ASSOCIATED MORTALITY**

Data are obtained from the Indiana National Electronic Disease Surveillance System (I-NEDSS). Influenza-associated deaths are reportable within 72 hours of knowledge; however, not all cases are reported in a timely manner so data in this report are subject to change as additional cases are back-reported.

Number of Laboratory Confirmed Influenza-Associated Deaths for All Ages, Indiana, 2015-2016 Season	
Age Category, years	Season Total
0-4	0
5-24	0
25-49	0
50-64	1
65+	0
Total	1

Counties with ≥5 Laboratory Confirmed Influenza-Associated Deaths for All Ages, 2015-2016 Season			
County	Season Total	County	Season Total

### **Number of Reported Influenza-Associated Deaths by Week of Death, All Ages, Indiana, 2015-16**





# Indiana State Department of Health

## VIROLOGIC SURVEILLANCE

Circulating Influenza Viruses Detected by ISDH Laboratory*, Indiana, 2015-2016 Season				
PCR Result	Week 42		Season Total	
	Number	Percent of Specimens Received	Number	Percent of Specimens Received
2009 A/H1N1pdm virus	0	0%	0	0%
Influenza A/H3 seasonal virus	0	0%	0	0%
Influenza A/H1 seasonal virus	0	0%	0	0%
Influenza B seasonal virus	0	0%	0	0%
Influenza negative	6	100%	19	86.4%
Inconclusive	0	0%	0	0%
Unsatisfactory specimen <sup>†</sup>	0	0%	3	13.6%
Influenza Co-infection <sup>Δ</sup>	0	0%	0	0%
<b>Total</b>	<b>6</b>	<b>100%</b>	<b>22</b>	<b>100%</b>

\* Data obtained from the ISDH Laboratory via specimens submitted from the ISDH Sentinel Influenza Surveillance System and IN Sentinel Laboratories.

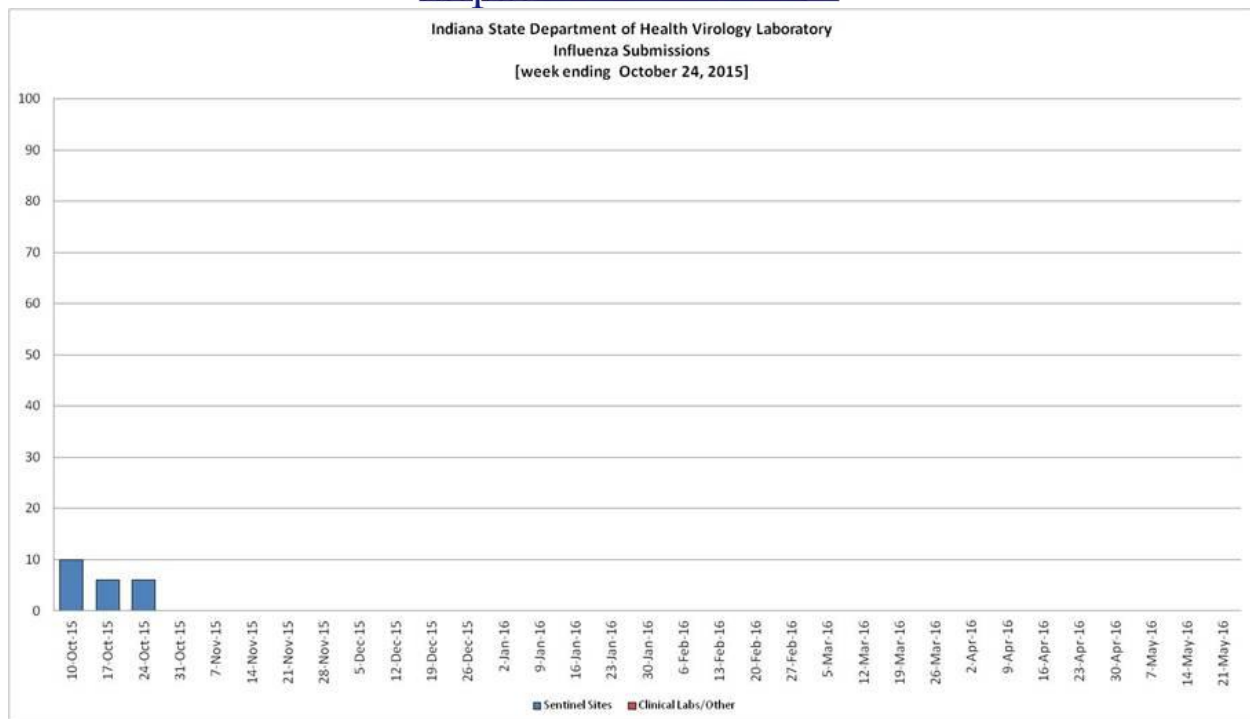
<sup>†</sup> Unsatisfactory specimens include specimens that leaked in transit, were too long in transit, or were inappropriately labeled.

<sup>Δ</sup> All previous-year co-infections have been influenza A/H3 and influenza B.

Circulating Non-Influenza Viruses Detected by the ISDH Laboratory, Indiana, 2015-2016 Season			
Result	Week 42	Season Total (Since 10/1/15)	Early Surveillance (9/1/15 - 9/30/15)
<b>Adenovirus</b>	0	0	0
<b>Coronavirus 229E</b>	0	0	0
<b>Coronavirus HKU1</b>	0	0	0
<b>Coronavirus NL63</b>	0	0	0
<b>Coronavirus OC43</b>	0	0	0
<b>Enterovirus NOS</b>	0	0	0
<b>Enterovirus/Rhinovirus<sup>1</sup></b>	0	1	1
<b>Human Metapneumovirus</b>	0	0	0
<b>Parainfluenza 1 Virus</b>	0	0	1
<b>Parainfluenza 2 Virus</b>	0	0	0
<b>Parainfluenza 3 Virus</b>	0	0	0
<b>Parainfluenza 4 Virus</b>	0	1	0
<b>Rhinovirus</b>	0	0	0
<b>Respiratory Syncytial Virus</b>	0	0	0
<b>Total</b>	<b>0</b>	<b>2</b>	<b>2</b>



# Indiana State Department of Health



## **FLU BUZZ**

### **Flu Vaccine Resources**

- [2015-16 U.S. recommendations for prevention and control of seasonal influenza from the Advisory Committee on Immunization Practices](#)
- [Influenza vaccine information from clinicians from the CDC](#)

- Upcoming ISDH Webinar:

The live webcast of the 2015-16 ISDH Influenza Vaccination Webinar will be on Wednesday, November 18, 2015 from 12:00-1:00 PM (ET). [Register today!](#)

### **Flu News and Related Studies**

- [113.04 million doses of flu vaccine distributed in U.S.](#) (CDC)
- [Indiana health officials announce the first Indiana influenza death of 2015-16 Season](#) (ISDH)
- [Early flu treatment reduces hospitalization time, disability risk in older people](#) (Clinical Infectious Diseases)

### **For Further Information, Visit:**

[www.in.gov/isdh/25462.htm](http://www.in.gov/isdh/25462.htm)

[www.cdc.gov/flu](http://www.cdc.gov/flu)

[www.flu.gov](http://www.flu.gov)